



Contents lists available at ScienceDirect

Arabian Journal of Chemistry

journal homepage: www.ksu.edu.sa

Original article

Formation of ketoprofen methyl ester artifact in GC–MS analysis of basic drugs in horse urine using alkaline liquid-liquid extraction


 Chaksawat Sangawitayakorn^a, Pirom Chenprakhon^b, Prapin Wilairat^{c,*}, Rattikan Chantiwas^{a,*}
^a Department of Chemistry and Center of Excellence for Innovation in Chemistry, Faculty of Science, Mahidol University, Rama VI Rd., Bangkok 10400, Thailand

^b Institute for Innovative Learning, Mahidol University, Nakhon Pathom 73170, Thailand

^c Analytical Sciences and National Doping Test Institute, Mahidol University, Rama VI Rd., Bangkok 10400, Thailand

ARTICLE INFO

Keywords:

 Artifacts
 Ketoprofen methyl ester
 Horse urine
 Liquid–liquid extraction
 GC–MS
 Drug analysis

ABSTRACT

This study investigates the unexpected formation of ketoprofen methyl ester (KME) during the routine alkaline liquid–liquid extraction (LLE) process for analyzing basic drugs in horse urine samples using GC–MS analysis. An unidentified peak in the GC–MS chromatogram was observed in certain horse urine samples, identified as KME through mass spectral comparison with *in situ* synthesized KME. Since the KME is not a metabolite of ketoprofen present in urine, it is proposed that its formation occurs during the LLE process due to the reaction between ketoprofen contained in the urine and methanol used as the solvent of the spiked internal standard. Surprisingly, no artifact was detected when negative quality control horse urine samples (absence of ketoprofen) even when spiked with standard ketoprofen and methanol. Further investigation indicated that the presence of lipase enzymes from bacteria in specific urine samples is the key factor in the formation of the KME artifact. This hypothesis was confirmed when negative quality control horse urines were spiked with ketoprofen, methanol, and a lipase enzyme and the KME artifact was detected. Additionally, the formation of a methyl ester artifact was also detected for flunixin, a carboxylic acid NSAID drug, when negative quality control horse urines were spiked with the drug, methanol, and lipase enzyme. These findings will be valuable for scientists analyzing drugs in urine.

1. Introduction

Identification of artifact formation is of concern in chemical analysis. Modern analytical procedure usually involves multiple steps which can include sampling and sample preparation before the final analysis usually performed by chromatographic instruments, i.e., gas chromatography (GC) or liquid chromatography (LC) with mass spectrometric detection. The detection of an unexpected peak in the chromatogram may signal artifact formation during any of the many steps of the analytical process. Failure to recognize these artifacts can lead to misinterpretation of the sample, e.g., affecting the number of components present in the sample (Hornbeck et al., 1993), incorrect calculation of the concentration of a component (Jones and Chalmers, 2000, Huang, 2005) or incorrect identification of a metabolite of drugs (Thevis et al., 2015).

The artifacts can occur during the liquid–liquid extraction (LLE) step when using contaminated extraction solvent (Cone et al., 1982, Miller and Boyd, 2020, Tsujikawa et al., 2020, Tsujikawa et al., 2022). Artifacts

can also be formed during the derivatization step after LLE (Moffat et al., 1991, Jones and Chalmers, 2000, Huang, 2005), or even from pyrolysis in the GC liner (Hornbeck et al., 1993, Holowinski et al., 2022, Dawidowicz et al., 2023). Previous studies, as listed in Table 1, have reported artifact formation during LLE or derivatization using gas chromatography-mass spectrometry (GC–MS) analysis. However, when detected and identified they can usually be eliminated by suitable modification of the procedure or recognized as arising from the method of analysis.

In the context of analyzing basic drugs in horse urine by alkaline LLE with GC–MS detection (Yi et al., 2013, Guo et al., 2015, Wang et al., 2015, Wozniak et al., 2018), an unidentified peak, tentatively identified as ketoprofen methyl ester (KME) through comparison with a mass spectral library, was observed in certain urine samples. Notably given that previous studies (Benoit et al., 1992, Sams et al., 1995, Alkhatheeri et al., 1999a, 1999b) have established that KME is not a metabolite of ketoprofen excreted in horse urine, the unexpected appearance of this artifact, which has not been previously reported (see Table 1), requires

Peer review under responsibility of King Saud University.

* Corresponding authors.

E-mail addresses: prapin.wil@mahidol.ac.th (P. Wilairat), rattikan.cha@mahidol.ac.th, rattikan.cha@mahidol.edu (R. Chantiwas).<https://doi.org/10.1016/j.arabjc.2024.105727>

Received 3 December 2023; Accepted 10 March 2024

Available online 17 March 2024

1878-5352/© 2024 The Author(s). Published by Elsevier B.V. on behalf of King Saud University. This is an open access article under the CC BY-NC-ND license (<http://creativecommons.org/licenses/by-nc-nd/4.0/>).

Table 1

Previous studies of artifact formation arising during LLE or from derivatization, as detected by GC-MS analysis.

| Study no. | Artifact (analyte) | Sample and its preparation | Variables studied | Cause of artifact formation | Ref. |
|-----------|--|--|--|--|---------------------------|
| 1 | Carbamoyl chlorides and ethyl carbamates (Nitrogen containing drugs) | Sample: Aqueous solution of nitrogen-containing drugs LLE: Solvent: chloroform contaminated phosgene, chloroform stabilized with ethanol and sample pH adjusted: pH 9.5 | 1. Identity of artifact 2. Preservatives and chloroform exposure to air 3. Rate of artifact conversion 4. Concentration of nitrogen containing drugs 5. Type of nitrogen-containing drugs 6. Method for removal of artifact | – Phosgene reacts with nitrogen-containing drugs to produce carbamoyl chlorides. – Traces of phosgene react with ethanol to give ethyl chloroformate which, in turn, reacts with the nitrogen-containing drugs to produce ethyl carbamates. | Cone et al. (1982) |
| 2 | BHT derivative ^a (Fatty acid) | Sample: Fish oils, food products and pathological samples Saponification of lipid extraction: Reagent: methanolic NaOH, BHT, anti-bumping granules and benzene Derivatization of free fatty acid: Reagent: BF ₃ in methanol LLE of methyl ester: Solvent: hexane | 1. Identity of artifact 2. Effect of BHT, benzene and water | BHT was derivatized by BF ₃ . | Moffat et al. (1991) |
| 3 | Methamphetamine (PS and EP) | Sample: Urine or water containing high levels of PS or EP LLE: Solvent: methylene chloride and 1-chlorobutane with 1 N NaOH Derivatization: Reagent: CB, HFB and TFAP | 1. Identity of artifact 2. Concentrations of PS or EP 3. Derivatization condition 4. GC conditions | – Derivatization of PS and EP with CB, HFB and TFAP. – Thermal conversion of PS or EP to methamphetamine in high temperature of the injector (300 °C). | Hornbeck et al. (1993) |
| 4 | di-TMS, tri-TMS derivatives of HMG, mono-TMS and di-TMS derivatives of 3-HIVA (Organic acid) | Sample: Urine of patients with HMG LLE: Solvent: ethyl acetate, sample pH adjusted: pH 1, salt: solid NaCl and IS: <i>n</i> -Tetracosane and <i>n</i> -hexacosane Derivatization: Reagent: BSTFA | 1. Identity of artifact 2. Different extraction methods | Incomplete derivatization of HMG. | Jones and Chalmers (2000) |
| 5 | Methyl mercury and ethyl mercury (Methyl mercury and ethyl mercury) | Sample: Environmental samples LLE: Solvent: cyclopentane, sample pH adjusted: pH 4 and IS: triethyltin Derivatization: Reagent: NaBPr ₄ | 1. Buffer concentration 2. Amount of NaBPr ₄ 3. Amount of triethyltin 4. Influence of artifact on quantification | Hg(II) reacted with NaBPr ₄ | Huang (2005) |
| 6 | Isocyanate and urea artifacts ^b (Amphetamine-type substances) | Sample: Aqueous solution of amphetamine-type substances LLE: Solvent: phosgene-contaminated chloroform and sample pH adjusted: pH 14 | Identity of artifacts | Phosgene reacts with amphetamine-type substances. | Miller and Boyd (2020) |
| 7 | DPO (Ephedrines) | Sample: Ephedrines in basic aqueous solution LLE: Solvent: chloroform | Storage of chloroform (stored after opening the bottle, stored without opening the bottle) | Phosgene in deteriorated chloroform reacted with ephedrines | Tsujikawa et al. (2020) |
| 8 | DPO and TPO (Ephedrines) | Sample: Ephedrines in basic aqueous solution of LLE: Solvent: ethyl acetate contaminated with formaldehyde and acetaldehyde | 1. Identity of artifact 2. Concentration of acetaldehyde 3. Temperature of GC injector 4. Washing ethyl acetate 5. Ratio of acetaldehyde and ephedrines 6. High concentration methamphetamine | Aldehydes reacted with ephedrines | Tsujikawa et al. (2022) |
| 9 | Trifluoroacetic ester of Δ8-THC and Δ9-THC (Cannabidiol) | Sample: Blood and plasma Protein precipitation: Reagent: trifluoroacetic acid LLE of supernatants: Solvent: acetonitrile or dichloromethane or ethyl acetate or hexane | 1. Identity of artifact 2. GC injector temperature 3. Type of extracting solvents | Cannabidiol transformation in the GC injector when trifluoroacetic acid is used as a protein precipitation agent. | Holowinski et al. (2022) |
| 10 | Trichloroacetic and dichloroacetic ester of Δ8-THC and Δ9-THC (Cannabidiol) | Sample: Blood and plasma Protein precipitation: Reagent: trichloroacetic acid LLE of supernatants: Solvent: acetonitrile or dichloromethane or ethyl acetate or hexane | 1. Identity of artifact 2. GC injector temperature 3. Type of extracting solvents | – Cannabidiol transformation in the GC injector when trichloroacetic acid is used as a protein precipitation agent. – The appearance of dichloroacetic esters of Δ8-THC and Δ9-THC among CBD transformation products is probably the result of the thermal decomposition of | Dawidowicz et al. (2023) |

(continued on next page)

investigation of its formation. It should be added that other metabolites of ketoprofen have been detected in equine urine (Knych et al., 2023). It is hypothesized that the formation of the KME artifact arises from the reaction between ketoprofen, present in horse urine, and the methanol used as the solvent for the internal standard (IS, diphenylamine) added to the urine samples. Additionally, it was found that the KME artifact's formation also requires the presence of a lipase enzyme in the urine.

2. Material and methods

2.1. Chemicals and reagents

Ketoprofen (purity $\geq 98.0\%$, AR grade), flunixin (purity $\geq 98.0\%$, AR grade), flufenamic acid (purity 97.0% , AR grade), diphenylamine (purity $\geq 98.5\%$, GC grade), lipase from *Candida rugosa* (specific activity ≥ 700 U/mg) and Novozym 435 (lipase from *Candida antarctica* immobilized on acrylic resin, specific activity ≥ 5000 U/g) were from Sigma-Aldrich (St. Louis, MO, USA). Methyl iodide (purity $\geq 99.0\%$, GC grade), acetone (purity $\geq 99.8\%$, HPLC grade), potassium hydroxide (purity $\geq 85.0\%$, AR grade), and anhydrous sodium sulfate (purity $\geq 99.0\%$, AR grade) were supplied by Merck (Darmstadt, Germany). Methanol (purity 99.9% , HPLC grade) was from Scharlau Chemie (Barcelona, Spain). Dimethyl sulfoxide (DMSO) (purity 99.9% , AR grade), hydrochloric acid 37% (AR grade), and *tert*-butyl methyl ether (TBME) (purity 99.8% , HPLC grade) were from RCI Labscan (Bangkok, Thailand). Sodium phosphate dibasic heptahydrate (purity $\geq 98.0\%$, ACS grade salts) and sodium phosphate monobasic monohydrate (purity $\geq 98.0\%$, ACS grade salts) were from Honeywell (Seelze, Germany). Normal saline solution (sodium chloride 0.9% w/v) was supplied by A. N.B Laboratories (Bangkok, Thailand). Ultrapure water (18.0 M Ω -cm) was produced from the Milli-Q Advantage A10 water purifying system (Merck, Darmstadt, Germany).

2.2. GC-MS instrument and operation

The GC-MS instrument was an Agilent 6890 gas chromatograph with a 7683 automatic sample injector coupled to a 5973 quadrupole mass spectrometer (Agilent Technologies, Palo Alto, CA, USA).

The GC column was a 5% phenylmethylpolysiloxane (HP-5 Ultra I, $30\text{ m} \times 0.25\text{ mm i.d.} \times 0.25\text{ }\mu\text{m}$ film thickness) from Agilent Technologies (Palo Alto, CA, USA). Helium (99.999% purity) was used as the carrier gas at a constant flow rate of 1.0 mL min^{-1} . The injection port temperature was $280\text{ }^\circ\text{C}$. The GC temperature program was as follows: initial $90\text{ }^\circ\text{C}$, hold 0.13 min , increasing to $300\text{ }^\circ\text{C}$ at $25\text{ }^\circ\text{C min}^{-1}$, with a final hold time of 1.00 min . The total chromatographic time was 9.53 min . The sample injection volume was $2.0\text{ }\mu\text{L}$ with a split ratio of $10:1$ and electron ionization (EI) at 70 eV . The temperature of the transfer

line and the ion volume were set at $280\text{ }^\circ\text{C}$ and $250\text{ }^\circ\text{C}$, respectively.

The mass spectrometer was operated in full scan mode from m/z 40 to 400. The solvent delay time was 3.00 min . The quantitation and diagnostic ions (percent relative abundance in parenthesis) for each compound are as follows: KME: m/z 209 (100), m/z 105 (83.1) and m/z 268 (35.3, molecular ion); flunixin methyl ester: m/z 295 (100), m/z 263 (79.1) and m/z 310 (33.4; molecular ion); diphenylamine (IS): m/z 169; and flufenamic methyl ester (IS) m/z 263. Quantification employed the peak area ratio of the base peak of the target compound to the base peak of the appropriate IS.

2.3. Preparation of standard solutions

Each stock standard solution of diphenylamine (10 mg mL^{-1}), flufenamic acid (10 mg mL^{-1}), ketoprofen (20 mg mL^{-1}), and flunixin (20 mg mL^{-1}) was prepared by adding the appropriate amount of each compound in 5.0 mL volumetric flask and making to volume with methanol or DMSO. The stock solutions were kept at $4\text{ }^\circ\text{C}$ until needed. Working standard solutions of diphenylamine (0.25 mg mL^{-1}), flufenamic acid (0.25 and 2.5 mg mL^{-1}), ketoprofen (0.05 , 0.5 , and 5 mg mL^{-1}), and flunixin (0.5 mg mL^{-1}) were prepared daily by diluting the stock standard solutions with methanol or DMSO.

Phosphate buffer (25.0 mM , pH 7.0) was prepared from sodium phosphate dibasic heptahydrate and sodium phosphate monobasic monohydrate. Enzyme suspension of lipase from *Candida rugosa* (25 mg mL^{-1}) was prepared freshly by adding the appropriate amount of enzyme in a 5.0 mL volumetric flask and making it to volume with the phosphate buffer solution.

2.4. Horse urine samples

Horse urine samples, designated for disposal, were obtained from the National Doping Control Center (NDCC), Analytical Sciences, and National Doping Test Institute, Mahidol University. The use of horse urine samples was reviewed and approved by the Institutional Animal Care and Use Committee of Mahidol University, Faculty of Science (MUSC-IACUC), Bangkok, Thailand (Approval No. MUSC63-036-544). All experiments were performed following the guidelines and regulations of MUSC-IACUC.

The horse urine samples, including those with KME artifact peaks, and the negative quality control horse urine samples were analyzed for basic drugs at the NDCC using the procedure described in Section 2.5. Additionally, the negative quality control horse urine underwent further analysis, as described in Section 2.6, to confirm the absence of ketoprofen. After centrifugation (Allegra X-22R, Beckman Coulter, USA) at 4000 rpm for 30 min , the supernatants were collected and stored at $-20\text{ }^\circ\text{C}$. Samples were thawed at room temperature before analysis.

Table 1 (continued)

| Study no. | Artifact (analyte) | Sample and its preparation | Variables studied | Cause of artifact formation | Ref. |
|-----------|---------------------------------------|--|--|---|-----------|
| 11 | Ketoprofen methyl ester (Basic drugs) | Sample: Horse urine containing a high concentration of ketoprofen LLE: Solvent: TBME, sample pH adjusted: pH > 10 and IS: diphenylamine dissolved in methanol | 1. Identity of artifact 2. Percent formation of artifact 3. Role of methanol and lipase enzyme 4. Artifact formation of flunixin (other NSAIDs) | their trichloroacetic esters in the GC injector. Lipase enzyme-catalyzed reaction of ketoprofen in horse urine with methanol from the internal standard. | This work |

BHT: Butylated hydroxytoluene (2,6-Di-*tert*-butyl-4-methylphenol); **PS:** Pseudoephedrine; **EP:** Ephedrine; **CB:** 4-carbomethoxyhexafluorobutyl chloride; **HFB:** Heptafluorobutyric anhydride; **TFAP:** N-trifluoroacetyl-L-prolylchloride; **TMS:** trimethylsilyl; **HMG:** 3-Hydroxy-3-methylglutaric acid; **3-HIVA:** 3-hydroxyisovaleric acid; **BSTFA:** N,O-bis-trimethylsilyltrifluoroacetamide; **NaBPr₄:** Sodium tetra(*n*-propyl)borate; **DPO:** 3,4-dimethyl-5-phenyloxazolidine; **TPO:** 2,3,4-trimethyl-5-phenyloxazolidine; **$\Delta 9$ -THC:** delta-9-tetrahydrocannabinol; **$\Delta 8$ -THC:** delta-8-tetrahydrocannabinol.

^a 2,6-di-*tert*-butyl-4-methoxyphenol, 2,6-di-*tert*-butyl-4-methoxy-methylphenol, 2,6-di-*tert*-butyl-4-methoxy-5-hydroxyphenol.

^b 1-methyl-2-phenethyl isocyanate, *N,N'*-bis(1-methyl-2-phenethyl) urea, *N,N'*-bis(1-methyl-2-phenylethyl)-*N,N'*-dimethylurea, 1-methyl-2-(3,4-methylenedioxyphenyl)ethyl isocyanate, *N,N'*-bis(1-methyl-2-(3,4-methylene-dioxyphenyl)ethyl)-*N,N'*-dimethylurea.

2.5. Procedure for alkaline LLE for basic drugs in horse urine

The alkaline LLE method for basic drugs (e.g., nicotine, caffeine, amphetamine, and methamphetamine) producing the KME artifact is described in this section with the GC–MS method described in Section 2.2. This method is employed for the artifact formation of KME and flunixin methyl ester.

Aliquots of 5.0 mL horse urine samples were pipetted into 10 mL screw-cap glass test tubes and 20 μL of the IS (0.25 mg mL^{-1} diphenylamine in methanol) was added to each tube. The samples were adjusted to a basic condition ($\text{pH} > 10$) with the addition of 200 μL of 5 M potassium hydroxide. Then, 3 g of anhydrous sodium sulfate was added to each tube as the salting-out agent, followed by 2.0 mL of the TBME extracting solvent. The tubes were screwed tight and shaken horizontally on a shaker (GFL 3006, Burgwedel, Germany) at 300 rpm for 15 min. After centrifugation for 10 min at 1800 rpm to obtain a clear separation of the two phases, the upper organic layer was pipetted into a new test tube and evaporated to dryness under a nitrogen stream at room temperature. The residue was reconstituted with 200 μL of TBME, and 2 μL of the sample was injected into the GC–MS instrument (see Section 2.2).

2.6. Determination of ketoprofen in horse urine by GC–MS

Determination of ketoprofen in horse urine by GC–MS involved an acidic liquid–liquid extraction (LLE) and methylation of the extracted ketoprofen to produce the methyl ketoprofen ester (KME) for analysis by GC–MS. The procedure followed a previously reported method (González et al., 1996) with a modification in the heating time of the methylation step.

A 1.0 mL aliquot of a horse urine sample (or spiked negative quality control horse urine) was pipetted into a 10 mL screw-cap glass test tube and 20 μL of IS (2.5 mg mL^{-1} flufenamic acid in methanol) was added. The urine was acidified ($\text{pH} 2\text{--}3$) by adding 200 μL of 1 M hydrochloric acid, followed by ca. 0.6 g of anhydrous sodium sulfate as the salting-out agent. Then, a 2.0 mL aliquot of TBME was added, and the tube was screwed tight. The tube was shaken horizontally on a shaker at 300 rpm for 15 min. After centrifugation for 10 min at 1800 rpm, the upper TBME layer was separated and evaporated to dryness under a nitrogen stream at room temperature.

The dry residue was dissolved in 1500 μL of acetone. Methylation was performed by pipetting 150 μL of the acetone solution into a clean 10 mL screw-cap glass test tube and adding 50 μL of methyl iodide and 50 mg of anhydrous potassium carbonate. The tube was screwed tight and heated in a heating block (HGT-2, Tianjin Hengao, China) at 60 $^{\circ}\text{C}$ for 30 min. After cooling to room temperature, 2 μL of the solution was injected into the GC–MS instrument for analysis (see Section 2.2).

For calibration, standard ketoprofen was added to 1.0 mL of negative quality control horse urines to give final concentrations of 1, 5, 10, 100, and 500 mg L^{-1} . The spiked urine samples were analyzed in triplicates as described above. The calibration curve was constructed from the plot of peak area ratios of the quantitation ions of KME and flufenamic acid methyl ester (IS) against the spiked concentrations of ketoprofen. A typical linear equation is $y = (0.0246 \pm 0.0005)x - (0.12 \pm 0.12)$, with a coefficient of determinations (r^2) of 0.9986, where y is the area ratio and x is the concentration of the added ketoprofen.

2.7. In situ synthesis of methyl esters of ketoprofen and flunixin

A 20 μL aliquot of 0.5 mg mL^{-1} standard ketoprofen or flunixin was added to a 10 mL screw-cap glass test tube together with 20 μL of 0.25 mg mL^{-1} flufenamic acid as the IS. The solution was dried under nitrogen at room temperature and the residue dissolved in 150 μL of acetone and derivatized as described in Section 2.6. The methyl esters of ketoprofen and flunixin synthesized by this method were used for mass spectral identification of the artifact peaks.

2.8. Determination of percent formation of ketoprofen methyl ester artifact

The method requires two parallel procedures to be carried out for the same urine sample: one is the basic extraction and detection of the KME artifact (Section 2.5), and the other is the acidic extraction and analysis of ketoprofen as its KME derivative (Section 2.6). Since the same compound is measured, the percent formation of artifact KME is conveniently found from the ratio of the peak areas ratios determined from the two procedures. However, to correctly compare the peak areas of the GC–MS chromatograms of two different sample preparations from the same urine, the same amount of the same internal standard (diphenylamine) must be present in the two solutions injected into the GC–MS instrument. Therefore, some steps in the two procedures are modified as described below. Complete details of the two modified procedures are given in Supplementary Material A.

In the alkaline LLE procedure (Section 2.5), 20 μL of only pure methanol was added to the horse urine sample in the extraction and drying steps. The final dry residue is reconstituted with 200 μL of TBME and 20.0 μL of 0.25 mg mL^{-1} diphenylamine (IS), dissolved in methanol. The volume of the solution for injection into the GC is 220 μL and contains 5 μg of diphenylamine (IS).

In the acidic LLE procedure (Section 2.6), after the final methylation step 20.0 μL of 0.25 mg mL^{-1} diphenylamine, dissolved in methanol, was added to the 200 μL of the methylation solution (cooled to room temperature). The volume of the solution for injecting into the GC is 220 μL and contains 5 μg of diphenylamine (IS).

Moreover, different volumes of horse urine are used in the two procedures, i.e., 5.0 mL for the alkaline LLE procedure and 1.0 mL for the acidic LLE step. In addition, only one-tenth of the latter acidic LLE is employed for derivatization. Therefore, the GC–MS peak area ratio from the acidic LLE process must be multiplied by a factor of 50.

The percent formation of KME is thus given by the following equation.

$$\text{Percent of KME artifact formation} = \frac{\text{Peak area ratio obtained from alkaline LLE}}{\text{Peak area ratio obtained from acidic LLE} \times 50} \times 100$$

2.9. Study of role of lipase in formation of KME artifact

2.9.1. Analysis of negative quality control urines spiked with ketoprofen

Aliquots of 5.0 mL of three negative quality control horse urines were spiked with ketoprofen (dissolved in DMSO), to give final concentrations of 70, 200, and 300 mg L^{-1} , respectively. Extraction and analysis were carried out as described in Section 2.5 for the alkaline liquid–liquid extraction procedure.

2.9.2. Analysis of negative quality control urines spiked with ketoprofen and lipase enzymes

Two lipase enzymes, namely, lipase from *Candida rugosa* (E1) and lipase from *Candida antarctica* immobilized on acrylic resin (Novozyme 435; E2), were employed. Enzyme suspension of lipase enzyme E1 (25 mg mL^{-1}) was prepared in 25 mM phosphate buffer pH 7.0 and 200 μL of the preparation was added to 5.0 mL of a negative quality control horse urine sample and normal saline solution. Similarly, 10 mg of lipase enzyme E2 was added to 5.0 mL negative quality control horse urine and normal saline solution.

The batch of negative quality control horse urine samples and saline solutions were analyzed as described in Section 2.5. The batch composition was: (a) negative quality control horse urine or saline solution spiked with ketoprofen, dissolved in DMSO at 200 mg L^{-1} ; (b) negative quality control horse urine or saline solution with lipase enzyme E1 or lipase enzyme E2 and spiked with ketoprofen at 200 mg L^{-1} . The methanol was again from the addition of the solution of diphenylamine (IS). The samples were analyzed in duplicates.

2.10. Analysis of formation of methyl ester artifact of flunixin

A 5.0 mL aliquot of negative quality control horse urine, spiked with flunixin (prepared in DMSO) at the concentration of 200 mg L^{-1} and $20 \text{ }\mu\text{L}$ of 0.25 mg mL^{-1} diphenylamine (IS) in methanol, was extracted in alkaline condition with TBME and analyzed as described in Section 2.5. Analyses were carried out in duplicates.

A 5.0 mL aliquot of the same negative quality control horse urine, spiked with flunixin and IS, as described above, but with the addition of 10 mg of lipase enzyme E2 (see Section 2.9.2) was extracted in alkaline condition with TBME and analyzed as described in Section 2.5. Analyses were carried out in duplicates.

3. Results and discussion

3.1. Identification and source of artifact peak formation

Fig. 1(A) displays an example of the total ion chromatogram (TIC) for an alkaline liquid–liquid extract of horse urine, featuring an artifact peak at 7.82 min. The diphenylamine (IS) peak appears at 5.65 min. The provisional identification of the artifact peak as KME was based on mass spectral library matching (see Fig. 1(B)(a) and 1(B)(b)). The identity of the KME artifact was confirmed by mass spectral comparison with an *in situ* synthesized KME from standard ketoprofen (see Section 2.7 and

Fig. 1B(c)) using three diagnostic ions and their percent relative abundance as described in Section 2.2. The identification criteria followed the World Anti-Doping Agency (WADA) Technical Document TD2023IDCR (WADA, 2023). The retention time (RT) of the *in situ* synthesized KME was also at 7.82 min (chromatogram not shown).

Table 2 presents the calculated values of the percent formation of the KME artifact, determined following the procedure described in Section

Table 2

Concentration of ketoprofen and percent formation of KME artifact in three horse urine samples.

| Horse urine sample | Concentration \pm SD (mg L^{-1}) (n = 3) | Peak area ratio of KME \pm SD | | Percent formation* \pm SD |
|--------------------|---|---------------------------------|-----------------|-----------------------------|
| | | Alkaline LLE | Acidic LLE | |
| Sample 1 | 70 ± 2 | 0.026 ± 0.002 | 0.99 ± 0.05 | 0.053 ± 0.004 |
| Sample 2 | 220 ± 14 | 0.35 ± 0.03 | 4.1 ± 0.7 | 0.17 ± 0.04 |
| Sample 3 | 350 ± 7 | 0.85 ± 0.08 | 5.74 ± 0.08 | 0.30 ± 0.03 |

* The peak area ratio for KME from acidic LLE is multiplied by 50 to take into account the smaller sample volume aliquoted and the fraction of extracted sample derivatized.

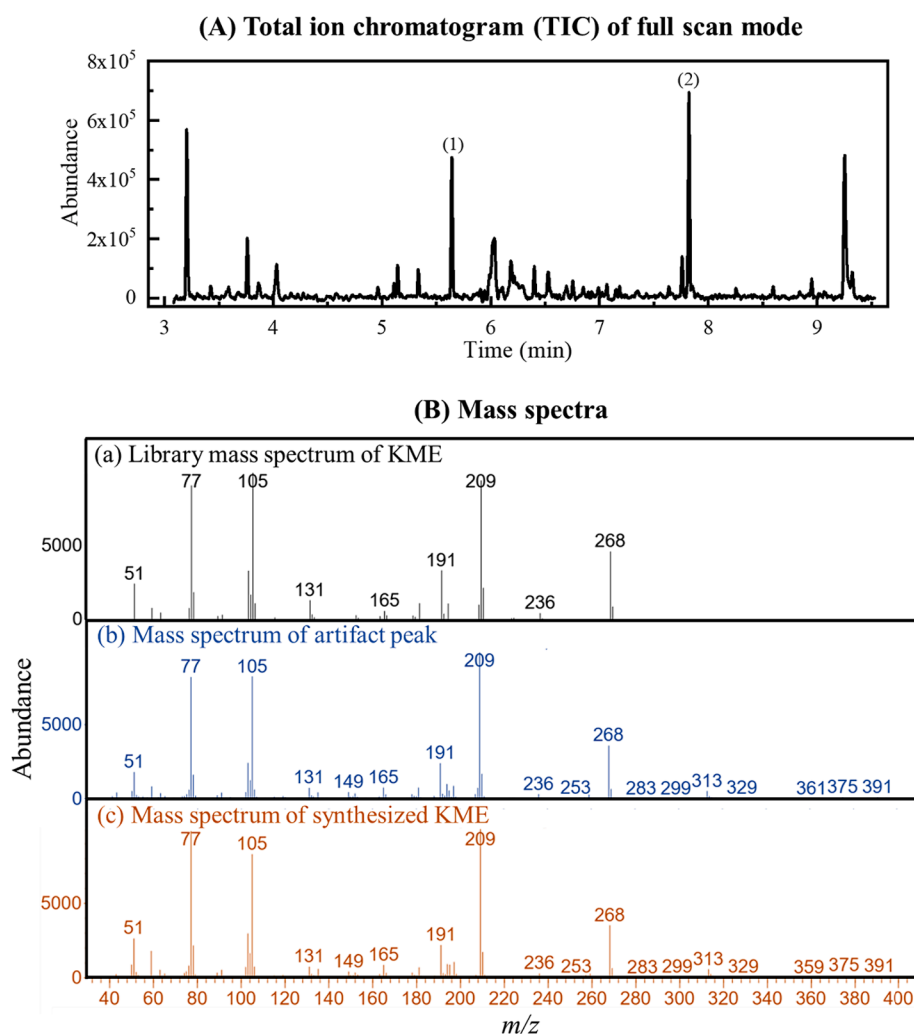


Fig. 1. (A) Example of a total ion chromatogram of full scan mode (m/z range 40 – 400) of TBME extract of alkaline horse urine with the artifact peak. Peak identification: (1) diphenylamine (IS), RT = 5.65 min and (2) artifact peak, RT = 7.82 min. (B) Mass spectra of (a) library matched mass spectrum of KME, (b) mass spectrum of artifact peak at RT = 7.82 min, and (c) mass spectrum of synthesized KME at RT = 7.82 min.

2.8. A correlation is observed between the amount of the KME artifact with the amount of ketoprofen in the horse urine, i.e., the higher the amount of ketoprofen, the greater the percentage of KME artifact formation. The percent formation of the artifact is very small ($<0.5\%$ of ketoprofen in the urine). The concentrations of ketoprofen in urine Sample 1, Sample 2, and Sample 3 are 70 ± 2 , 220 ± 14 , and 350 ± 7 mg L^{-1} respectively.

The reagent for methyl ester formation was identified as methanol, coming from the solvent of the internal standard solution spiked into the urine sample. This was confirmed by conducting an experiment where diphenylamine dissolved in DMSO was added to a horse urine sample that exhibited the KME artifact. The resulting sample underwent extraction and analysis using the procedure outlined for KME artifact formation (Section 2.5), conducted in triplicates. Fig. 2 shows the absence of a KME peak when methanol was excluded, conclusively confirming methanol as the source of methylation.

3.2. Role of lipase enzyme in artifact formation

Unexpectedly, no KME was produced when standard ketoprofen and the internal standard (IS) solution were added to three negative control urine samples (refer to Section 2.9.1). Fig. 3 shows the chromatogram of sample (H0), a horse urine sample spiked with 200 mg L^{-1} ketoprofen, revealing the absence of the KME artifact. A similar outcome was observed when normal saline solution was substituted for horse urine (see Fig. 3, chromatogram S0). Normal saline solution (sodium chloride 0.9% w/v) is commonly employed as a surrogate blank sample, given that urine contains a substantial amount of sodium chloride (Choe and Gajek, 2016, Zahoor et al., 2019). Consequently, it is evident that some other factor present in select horse urine samples is required for the formation of the small quantity of the KME artifact during the alkaline liquid–liquid extraction (LLE) step.

It has been well documented that samples of human urine contaminated with certain bacteria can result in the formation of derivatives of endogenous steroids in the urine due to enzymes produced by the bacteria (De La Torre et al., 2001, Bredehöft et al., 2012, Kuuranne et al., 2014, Schweizer Grundisch et al., 2014, Lioudakis et al., 2018). Thus,

the presence of bacteria in some samples of horse urine should also be a factor in the KME artifact formation. Bacteria commonly isolated from horses with urinary tract infections (UTI) include *Escherichia coli*, *Proteus*, *Klebsiella*, *Enterobacter*, *Corynebacterium*, *Streptococcus*, *Staphylococcus*, and *Pseudomonas* (Frye, 2006). Notably, some of these bacteria, such as *Staphylococcus*, are known to produce lipase enzymes (Gupta et al., 2004). Moreover, lipase enzymes have been identified in the urine of other animals, such as bovine urine (Kumar, 2013). It is noted that lipase enzymes are widely employed as biocatalysts for converting carboxylic acids to esters in the presence of alcohol under basic conditions (Park et al., 1999; Carvalho et al., 2006; Stergiou et al., 2013).

Lipase enzymes were added to negative quality control horse urine spiked with ketoprofen and the IS solution, as well as to normal saline solutions spiked similarly to the negative control urine (refer to Section 2.9.2). Extracted-ion chromatograms for m/z 209 (KME) for the samples are shown in Fig. 3. The peak area ratios of KME to diphenylamine (IS) for negative quality control horse urine (H0), negative quality control horse urine spiked with lipase enzyme E1 (H1), and negative quality control horse urine spiked with lipase enzyme E2 (H2) are (0.0 ± 0.0) , (0.011 ± 0.008) , and (0.5 ± 0.2) , respectively. The peak area ratios for saline solution (S0), saline solution spiked with lipase enzyme E1 (S1). Similarly, the peak area ratios for saline solution (S0), saline solution spiked with lipase enzyme E1 (S1), and saline solution spiked with lipase enzyme E2 (S2) are (0.0 ± 0.0) , (0.3 ± 0.2) , and (0.45 ± 0.05) , respectively. These chromatograms confirm that a lipase enzyme is necessary for KME artifact formation, thereby supporting the hypothesis that bacterial contamination is a key factor in KME artifact formation in horse urine. The notable variability in lipase-catalyzed KME formation may be attributed to the efficiency variability of the enzyme (Stergiou et al., 2013) and/or the use of the continuous liquid extraction process.

3.3. Methyl ester artifact formation by acidic NSAIDs

The artifact formation of methyl ester during alkaline LLE of horse urine may not be limited to ketoprofen but could possibly be produced by other carboxylic acid NSAID at sufficiently high concentration and with bacterial contamination. A study (see Section 2.10) was conducted

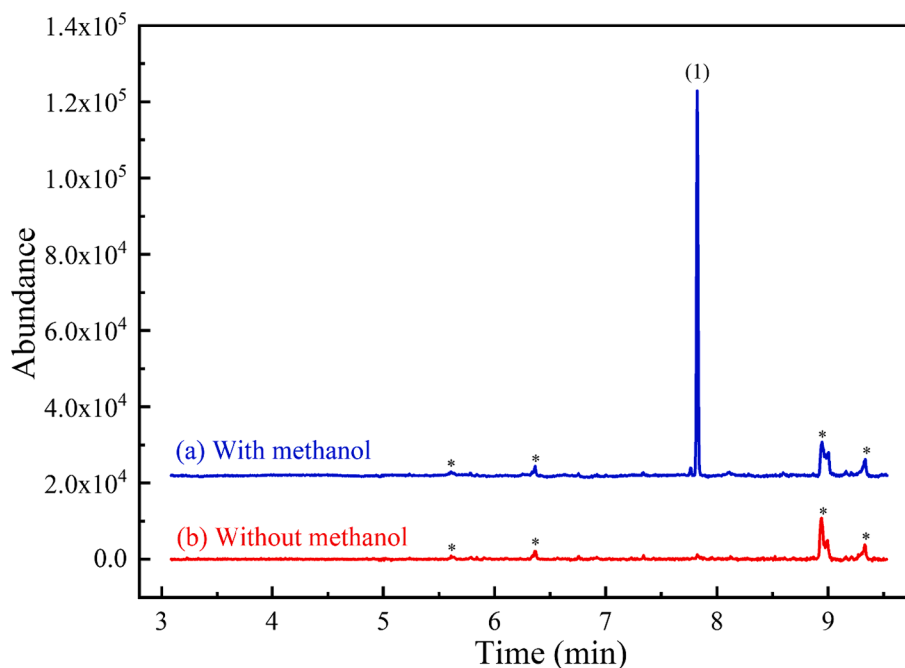


Fig. 2. Extracted-ion chromatograms of m/z 209 (KME) from full scan GC-MS (m/z range: 40–400) of TBME extracts of alkaline horse urine having an artifact peak: (a) with methanol and (b) without methanol (DMSO used as solvent of IS). The concentration of ketoprofen is 218 mg L^{-1} . Peak identification: (1) KME artifact, RT = 7.82 min; * unidentified peak.

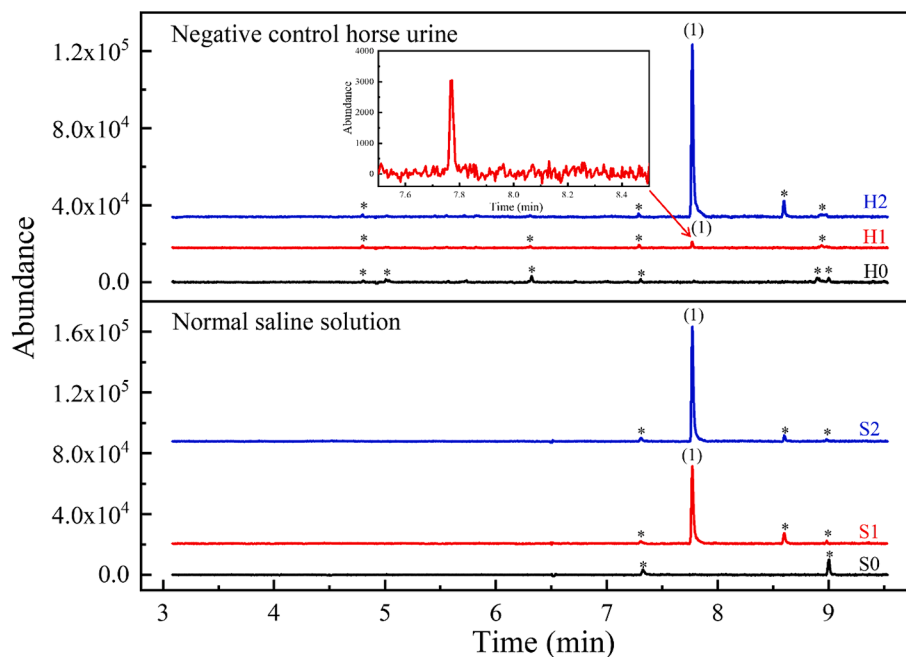


Fig. 3. Extracted-ion chromatograms of m/z 209 (KME) from full scan GC–MS (m/z range: 40–400) of negative quality control horse urine (H) and normal saline solution (S) spiked with ketoprofen at 200 mg L^{-1} and 0.4 % v/v methanol: H0: no lipase enzyme added; H1: lipase enzyme E1 added; H2: lipase enzyme E2 added; S0: no lipase enzyme added; S1: lipase enzyme E1 added; S2: lipase enzyme E2 added. The sample volume is 5.0 mL with $20 \mu\text{L}$ of diphenylamine (0.25 mg mL^{-1} dissolved in methanol) added. Peak identification: (1) KME artifact, $RT = 7.82 \text{ min}$; * unidentified peak.

using flunixin, a commonly employed NSAID in the treatment of horses (Kuroda et al., 2022).

As shown in Fig. 4, a negative quality control horse urine spiked with flunixin exhibited a peak for flunixin methyl ester only when a lipase enzyme was added. Tentative identification of the flunixin methyl ester was achieved through mass spectral library matching (refer to Fig. S1(a) and (b) in Supplementary Material B). The confirmation of the flunixin methyl ester artifact's identity was established through mass spectral comparison with *in-situ* synthesized flunixin methyl ester, employing three diagnostic ions and their respective percent relative abundance, as detailed in Section 2.7. The retention time (RT) for *in-situ* synthesized flunixin methyl ester was observed at 7.36 min (chromatogram not

shown).

4. Conclusion

The occasional detection of an unknown peak in the GC–MS analysis of horse urines for basic drugs using LLE in alkaline conditions was identified as ketoprofen methyl ester by mass spectral comparison with the compound synthesized *in situ* from standard ketoprofen. The methanol used as the solvent of the diphenylamine (IS) was verified to be the source of the alcohol for the methyl ester artifact formation. The percentage of the KME produced was very low, <0.5 % of ketoprofen in the urine.

Surprisingly, negative quality control horse urines spiked with ketoprofen at levels found in urine samples producing the KME artifact, along with the IS solution, did not exhibit the artifact peak. It was discovered that an enzyme from bacterial contamination was necessary to catalyze the methyl ester formation. This was confirmed by introducing lipase enzymes to the same spiked negative quality control horse urines, resulting in the formation of the KME artifact. Additionally, flunixin, a carboxylic acid NSAID, was found to produce the methyl ester artifact when negative quality control horse urine was spiked with standard flunixin, methanol, and lipase enzymes.

This study is an example of the numerous factors that must be considered in the search for the source of an unexpected chromatographic peak in chemical analysis.

CRediT authorship contribution statement

Chaksawat Sangawitayakorn: Methodology, Validation, Investigation, Writing – original draft, Writing – review & editing. **Pirom Chenprakhon:** Supervision. **Prapin Wilairat:** Methodology, Supervision, Writing – original draft, Writing – review & editing. **Rattikan Chantiwas:** Supervision, Project administration, Funding acquisition, Writing – original draft, Writing – review & editing.

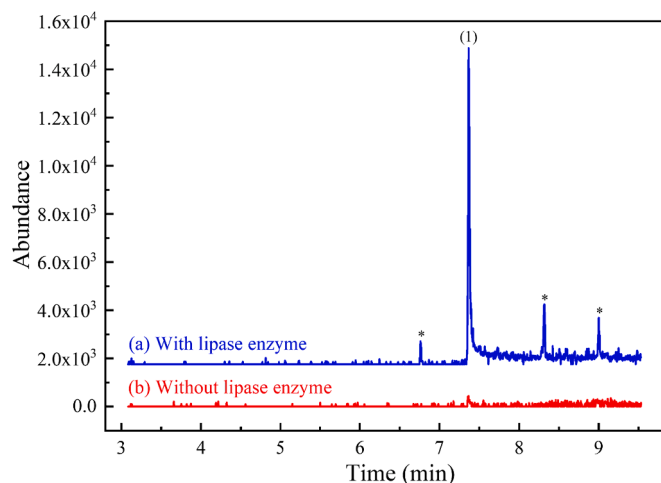


Fig. 4. Extracted-ion chromatograms of m/z 295 (flunixin methyl ester) from full scan GC–MS (m/z range: 40–400) of alkaline LLE of negative quality control horse urine spiked with flunixin at 200 mg L^{-1} and 0.4 % v/v methanol: (a) with lipase enzyme E2 added and (b) without lipase enzyme E2. Peak identification: (1) flunixin methyl ester artifact, $RT = 7.36 \text{ min}$; * (unidentified peaks).

Declaration of competing interest

The authors declare that they have no known competing financial interests or personal relationships that could have appeared to influence the work reported in this paper.

Acknowledgments

The English of this manuscript has been checked by Grammarly. This work is supported by Mahidol University (Strategic Research Fund): fiscal year 2024. The Science Achievement Scholarship of Thailand (SAST) is gratefully acknowledged for scholarships to CS. The Center of Excellence for Innovation in Chemistry (PERCH-CIC), Ministry of Higher Education, Science, Research and Innovation is gratefully acknowledged for support. The authors would like to thank the support of equipment from the Central Instrument Facility (CIF) grant, Faculty of Science, Mahidol University. The authors would also like to thank Ms. Apinya Obma (PhD student, Department of Chemistry, Faculty of Science, Mahidol University) for drawing the graphical abstract.

Appendix A. Supplementary material

Supplementary data to this article can be found online at <https://doi.org/10.1016/j.arabjc.2024.105727>.

References

- Alkathiri, N.A., Wasfi, I., Kvanagh, P., et al., 1999a. Identification and confirmation of 3-hydroxy metabolite of ketoprofen in camels by gas chromatography–mass spectrometry and nuclear magnetic resonance spectroscopy. *J. Chromatogr. B* 732, 299–306. [https://doi.org/10.1016/S0378-4347\(99\)00297-2](https://doi.org/10.1016/S0378-4347(99)00297-2).
- Alkathiri, N.A., Wasfi, I., Lambert, M., 1999b. Pharmacokinetics and metabolism of ketoprofen after intravenous and intramuscular administration in camels. *J. Vet. Pharmacol. Ther.* 22, 127–135. <https://doi.org/10.1046/j.1365-2885.1999.00193.x>.
- Benoit, E., Jaussaud, P., Besse, S., et al., 1992. Identification of a benzhydrolic metabolite of ketoprofen in horses by gas chromatography–mass spectrometry and high-performance liquid chromatography. *J. Chromatogr. B* 583, 167–173. [https://doi.org/10.1016/0378-4347\(92\)80549-6](https://doi.org/10.1016/0378-4347(92)80549-6).
- Bredenhöft, M., Baginski, R., Parr, M.-K., et al., 2012. Investigations of the microbial transformation of cortisol to prednisolone in urine samples. *J. Steroid Biochem. Mol. Biol.* 129, 54–60. <https://doi.org/10.1016/j.jsmb.2010.04.021>.
- Carvalho, P.D.O., Contesini, F.J., Ikegaki, M., 2006. Enzymatic resolution of (R, S)-ibuprofen and (R, S)-ketoprofen by microbial lipases from native and commercial sources. *Braz. J. Microbiol.* 37, 329–337. <https://doi.org/10.1590/S1517-83822006000300024>.
- Choe, K.-Y., Gajek, R., 2016. Determination of trace elements in human urine by ICP-MS using sodium chloride as a matrix-matching component in calibration. *Anal. Methods* 8, 6754–6763. <https://doi.org/10.1039/C6AY01877G>.
- Cone, E., Buchwald, W., Darwin, W., 1982. Analytical controls in drug metabolic studies. II. Artifact formation during chloroform extraction of drugs and metabolites with amine substituents. *Drug Metab. Dispos.* 10, 561–567.
- Dawidowicz, A.L., Dybowski, M.P., Typek, R., et al., 2023. Unexpected formation of dichloroacetic and trichloroacetic artefacts in gas chromatograph injector during Cannabidiol analysis. *J. Pharm. Biomed. Anal.* 230, 115388. <https://doi.org/10.1016/j.jpba.2023.115388>.
- De La Torre, R., De La Torre, X., Alía, C., et al., 2001. Changes in androgenic steroid profile due to urine contamination by microorganisms: a prospective study in the context of doping control. *Anal. Biochem.* 289, 116–123. <https://doi.org/10.1006/abio.2000.4918>.
- Frye, M.A., 2006. Pathophysiology, diagnosis, and management of urinary tract infection in horses. *Vet. Clin. Equine Pract.* 22, 497–517. <https://doi.org/10.1016/j.cveq.2006.03.004>.
- González, G., Ventura, R., Smith, A.K., et al., 1996. Detection of non-steroidal anti-inflammatory drugs in equine plasma and urine by gas chromatography–mass spectrometry. *J. Chromatogr. A* 719, 251–264. [https://doi.org/10.1016/0021-9673\(95\)00370-3](https://doi.org/10.1016/0021-9673(95)00370-3).
- Guo, L., Lin, Z.B., Huang, Z.B., et al., 2015. Simple and rapid analysis of four amphetamines in human whole blood and urine using liquid-liquid extraction without evaporation/derivatization and gas chromatography–mass spectrometry. *Forensic Toxicol.* 33, 104–111. <https://doi.org/10.1007/s11419-014-0257-2>.
- Gupta, R., Gupta, N., Rathi, P., 2004. Bacterial lipases: an overview of production, purification and biochemical properties. *Appl. Microbiol. Biotechnol.* 64, 763–781. <https://doi.org/10.1007/s00253-004-1568-8>.
- Holowinski, P., Typek, R., Dawidowicz, A.L., et al., 2022. Formation of trifluoroacetic artefacts in gas chromatograph injector during Cannabidiol analysis. *J. Chromatogr. A* 1671, 463020. <https://doi.org/10.1016/j.chroma.2022.463020>.
- Hornbeck, C.L., Carrig, J.E., Czarny, R.J., 1993. Detection of a GC/MS artifact peak as methamphetamine. *J. Anal. Toxicol.* 17, 257–263. <https://doi.org/10.1093/jat/17.5.257>.
- Huang, J.-H., 2005. Artifact formation of methyl- and ethyl-mercury compounds from inorganic mercury during derivatization using sodium tetra (n-propyl) borate. *Anal. Chim. Acta* 532, 113–120. <https://doi.org/10.1016/j.jca.2004.10.057>.
- Jones, M.G., Chalmers, R.A., 2000. Artefacts in organic acid analysis: occurrence and origin of partially trimethylsilylated 3-hydroxy-3-methyl carboxylic acids. *Clin. Chim. Acta* 300, 203–212. [https://doi.org/10.1016/S0009-8981\(00\)00324-7](https://doi.org/10.1016/S0009-8981(00)00324-7).
- Knych, H.K., McKemie, D.S., Kass, P.H., Stanley, S.D., Blea, J., 2023. Ketoprofen in horses: Metabolism, pharmacokinetics, and effects on inflammatory biomarkers. *Drug Test. Anal.* 1–14. <https://doi.org/10.1002/dta.3543>.
- Kumar, S., 2013. Analysis of cow's urine for detection of lipase activity and antimicrobial properties. *J. Pharm. Biol. Sci.* 7, 01–08. <https://doi.org/10.9790/3008-0710108>.
- Kuroda, T., Minamijima, Y., Nomura, M., et al., 2022. Medication control of flunixin in racing horses: Possible detection times using Monte Carlo simulations. *Equine Vet. J.* 54, 979–988. <https://doi.org/10.1111/evj.13532>.
- Kuوران, T., Saugy, M., Baume, N., 2014. Confounding factors and genetic polymorphism in the evaluation of individual steroid profiling. *Br. J. Sports Med.* 48, 848–855. <https://doi.org/10.1136/bjsports-2014-093510>.
- Lioudakis, E., Tsiyvu, M., Kioukia-Fougia, N., et al., 2018. The kinetics of ethanol markers and the impact on steroid profile upon bacterial contamination of urine doping control samples with *E. coli*. *J. Biomed. Pharm. Sci.* 1, 2.
- Miller, B., Boyd, S.E., 2020. The synthesis and identification of previously unreported artefacts formed during phosgene-contaminated chloroform extraction of amphetamine-type substances. *Forensic Chem.* 20, 100272. <https://doi.org/10.1016/j.forc.2020.100272>.
- Moffat, C.F., McGill, A.S., Anderson, R.S., 1991. The production of artifacts during preparation of fatty acid methyl esters from fish oils, food products and pathological samples. *J. High Resolut. Chromatogr.* 14, 322–326. <https://doi.org/10.1002/jhrc.1240140506>.
- Park, H.J., Choi, W.J., Huh, E.C., et al., 1999. Production of optically active ketoprofen by direct enzymatic esterification. *J. Biosci. Bioeng.* 87, 545–547. [https://doi.org/10.1016/S1389-1723\(99\)80109-1](https://doi.org/10.1016/S1389-1723(99)80109-1).
- Sams, R., Gerken, D., Ashcraft, S., 1995. Pharmacokinetics of ketoprofen after multiple intravenous doses to mares. *J. Vet. Pharmacol. Ther.* 18, 108–116. <https://doi.org/10.1111/j.1365-2885.1995.tb00563.x>.
- Schweizer Grundisch, C., Baume, N., Saugy, M., 2014. Degradation of methyltestosterone in urine samples. *Drug Test Anal.* 6, 1170–1173. <https://doi.org/10.1002/dta.1761>.
- Stergiou, P.-Y., Foukis, A., Filippou, M., et al., 2013. Advances in lipase-catalyzed esterification reactions. *Biotechnol. Adv.* 31, 1846–1859. <https://doi.org/10.1016/j.biotechadv.2013.08.006>.
- Thevis, M., Geyer, H., Thomas, A., et al., 2015. Formation of the diuretic chlorazaniol from the antimalarial drug proguanil—implications for sports drug testing. *J. Pharm. Biomed. Anal.* 115, 208–213. <https://doi.org/10.1016/j.jpba.2015.07.017>.
- Tsujikawa, K., Segawa, H., Kuwayama, K., et al., 2020. Phosgene in deteriorated chloroform: presumptive cause of production of 3,4-dimethyl-5-phenyl-2-oxazolones in methamphetamine. *Forensic Toxicol.* 38, 475–480. <https://doi.org/10.1007/s11419-019-00517-7>.
- Tsujikawa, K., Okada, Y., Segawa, H., et al., 2022. Formation of oxazolidine derivatives by reaction with ephedrine and aldehyde impurities in ethyl acetate. *J. Chromatogr. Sci.* 60, 316–323. <https://doi.org/10.1093/chromsci/bmab072>.
- WADA, 2023. WADA Technical Document-TD2021IDCR: minimum criteria for chromatographic-mass spectrometric confirmation of the identity of analytes for doping control purposes. https://www.wada-ama.org/sites/default/files/resources/files/td2023idcr_final_eng_0.pdf (accessed 14 March 2023).
- Wang, C.C., Hartmann-Fischbach, P., Krueger, T.R., et al., 2015. Fast and sensitive chiral analysis of amphetamines and cathinones in equine urine and plasma using liquid chromatography tandem mass spectrometry. *Am. J. Anal. Chem.* 6, 995. <https://doi.org/10.4236/ajac.2015.613094>.
- Wozniak, M.K., Wiergowski, M., Aszyk, J., et al., 2018. Application of gas chromatography-tandem mass spectrometry for the determination of amphetamine-type stimulants in blood and urine. *J. Pharm. Biomed. Anal.* 148, 58–64. <https://doi.org/10.1016/j.jpba.2017.09.020>.
- Yi, R., Zhao, S., Lam, G., et al., 2013. Detection and elimination profile of cathinone in equine after norephedrine (Propalin®) administration using a validated liquid chromatography–tandem mass spectrometry method. *Anal. Bioanal. Chem.* 405, 9711–9722. <https://doi.org/10.1007/s00216-013-7073-0>.
- Zahoor, N., Danilenko, U., Vesper, H.W., 2019. A fully automated high-throughput liquid chromatography tandem mass spectrometry method for measuring creatinine in urine. *Clin. Mass Spectrometry* 11, 1–7. <https://doi.org/10.1016/j.clinms.2018.11.002>.