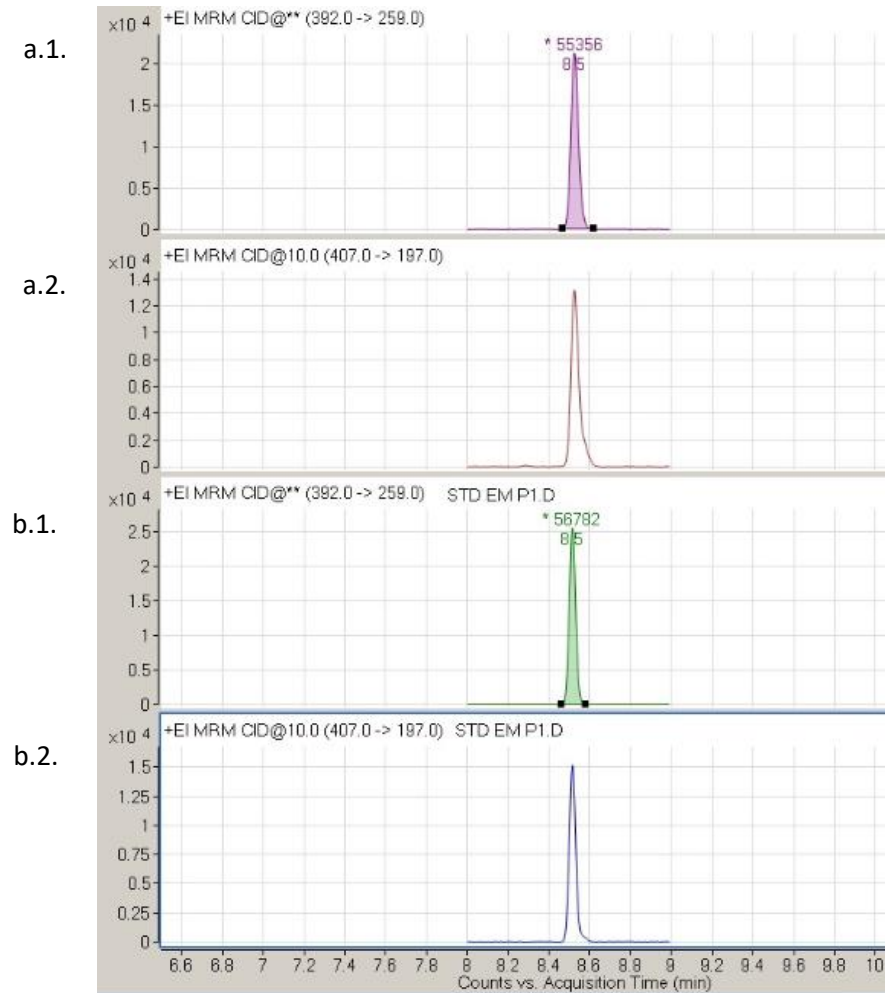
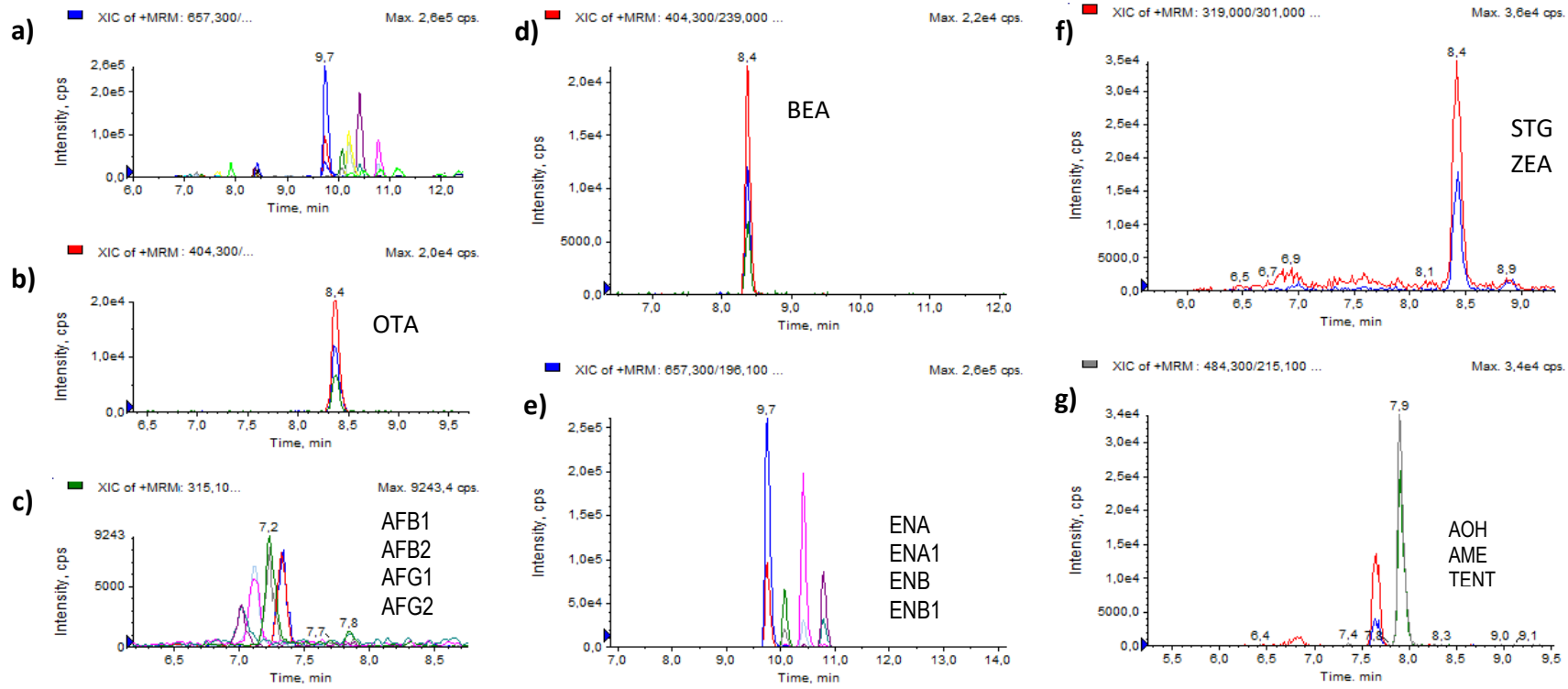


**Sup. Figure 1.** MRM chromatograms by GC MS/MS analysis of positive silage sample (quantitative transition a.1. and qualitative transition a.2.) which contain DON at 100 µg/kg, and standard solution (quantitative transition b.1. and qualitative transition b.2.) at 100 µg/mL.



**Sup. Figure.2.** MRM chromatograms, of total ion chromatograms (a) and analyzed mycotoxins: AFs (c), OTA (b), BEA (d), ENs (e) AME, AOH, TENT (g), ZEA and STG (f), at 150 µg/mL by LC MS/MS equipment.



**Sup. Figure 3.** MRM chromatograms of a positive silage sample which contain (ENB at 1.5 µg/kg) analyzed by LC MS/MS equipment.

