

The elemental distribution mapping of the nanoprobe

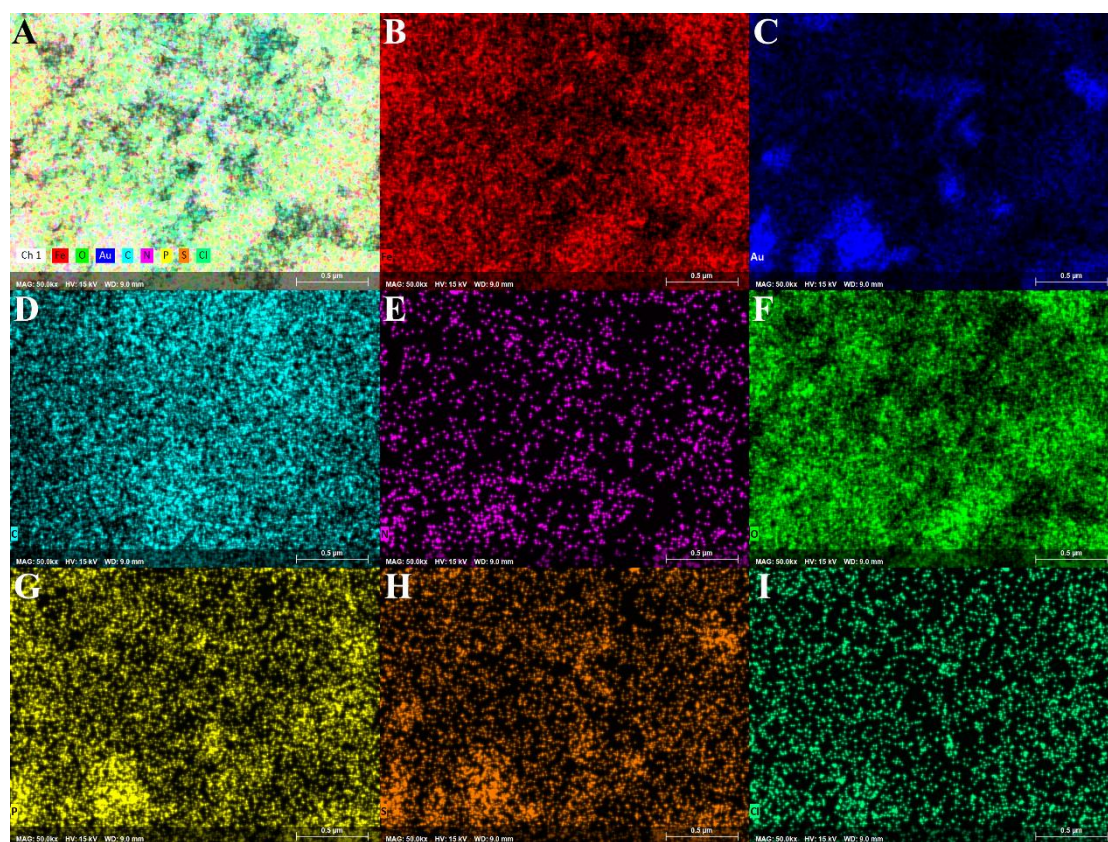


Fig. S2. The elemental distribution mapping of the $\text{Fe}_3\text{O}_4/\alpha\text{-Fe}_2\text{O}_3@Au\text{-hpS2}$ nanoprobe (A). (B)-(F) were respectively Fe, Au, C, N, O, P, S, and Cl elements distribution.