

Supplementary Figures

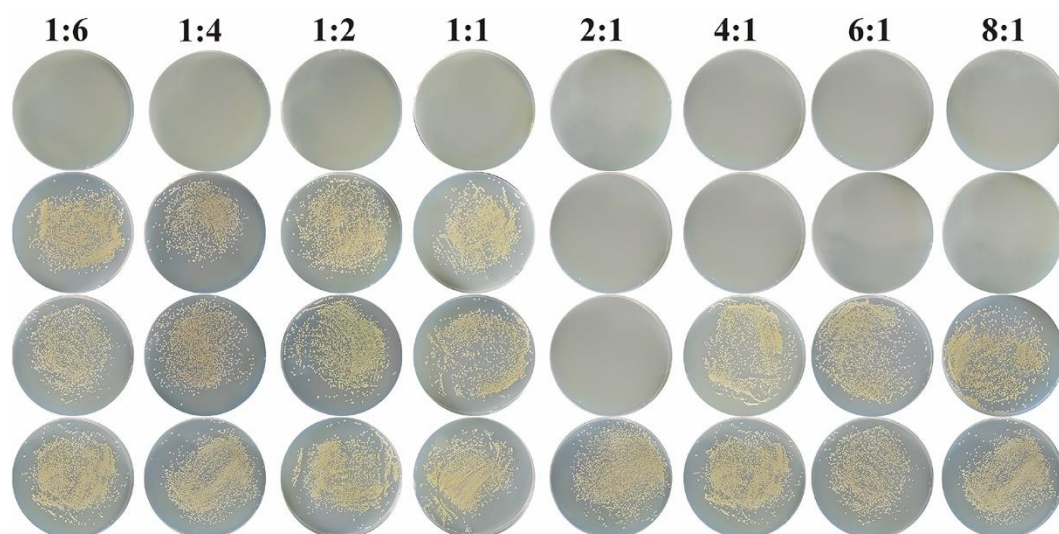


Fig. S1. Inhibitory effects of esculetin-manganese complex (ESM) synthesized at various molar ratios of esculetin (ES) to Mn^{2+} on *S. aureus*. The antibacterial activity of the reaction products progressively increased with increasing Mn^{2+} concentration until the ratio of ES to Mn^{2+} reached 2:1.